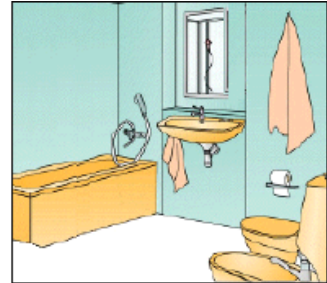
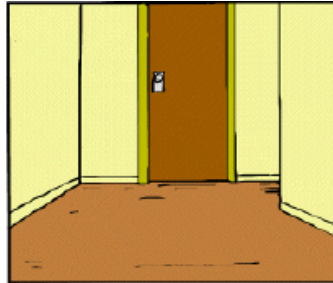
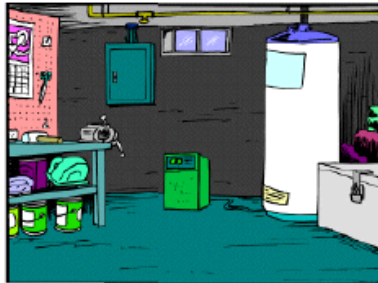


# Tornadoes



Pick a place where family members could gather if a tornado is headed your way.



Basements are best; if you don't have one, choose a center hallway, bathroom or closet on the lowest floor.

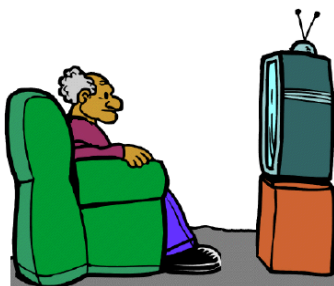
**If you are outside**, hurry to the basement or a nearby sturdy building or lie flat in a ditch or low-lying area.



**If you are in a car or mobile home**, get out immediately and head for safety.



After the tornado, watch out for fallen power lines and stay out of the damaged area.



Listen to the radio or watch local TV stations for information and instructions.

**Remember:** If you don't have a basement, a bathroom on the lowest floor of your home is a good place to seek shelter during a tornado. Be sure to take your weather radio into your temporary shelter.